

8.8. FUEL GAUGE CIRCUITRY (SINGLE TANK), P. 8

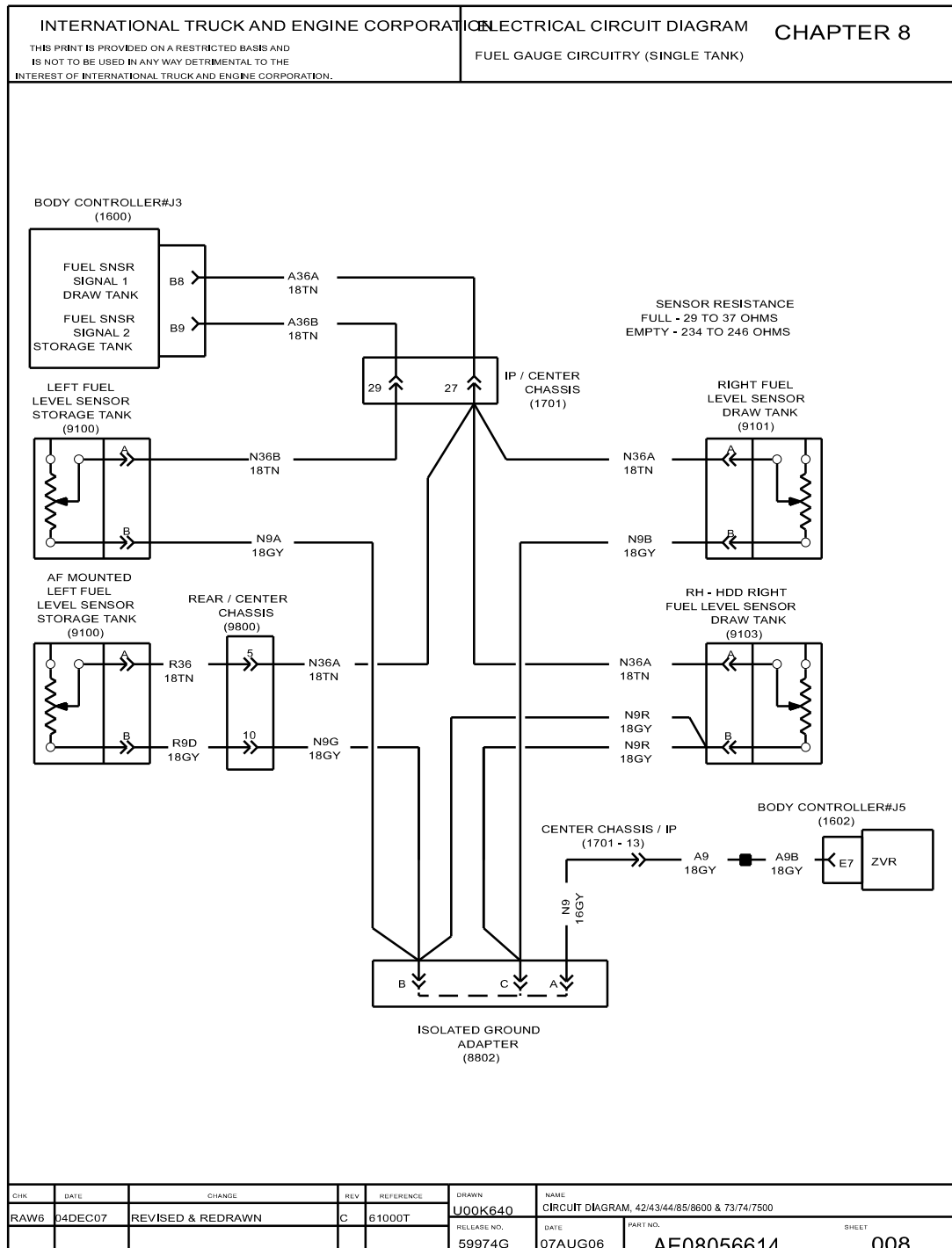


Figure 137 Fuel Gauge Circuitry (Single Tank)

8.9. DIFFERENTIAL LOCK WARNING LAMPS, P. 9

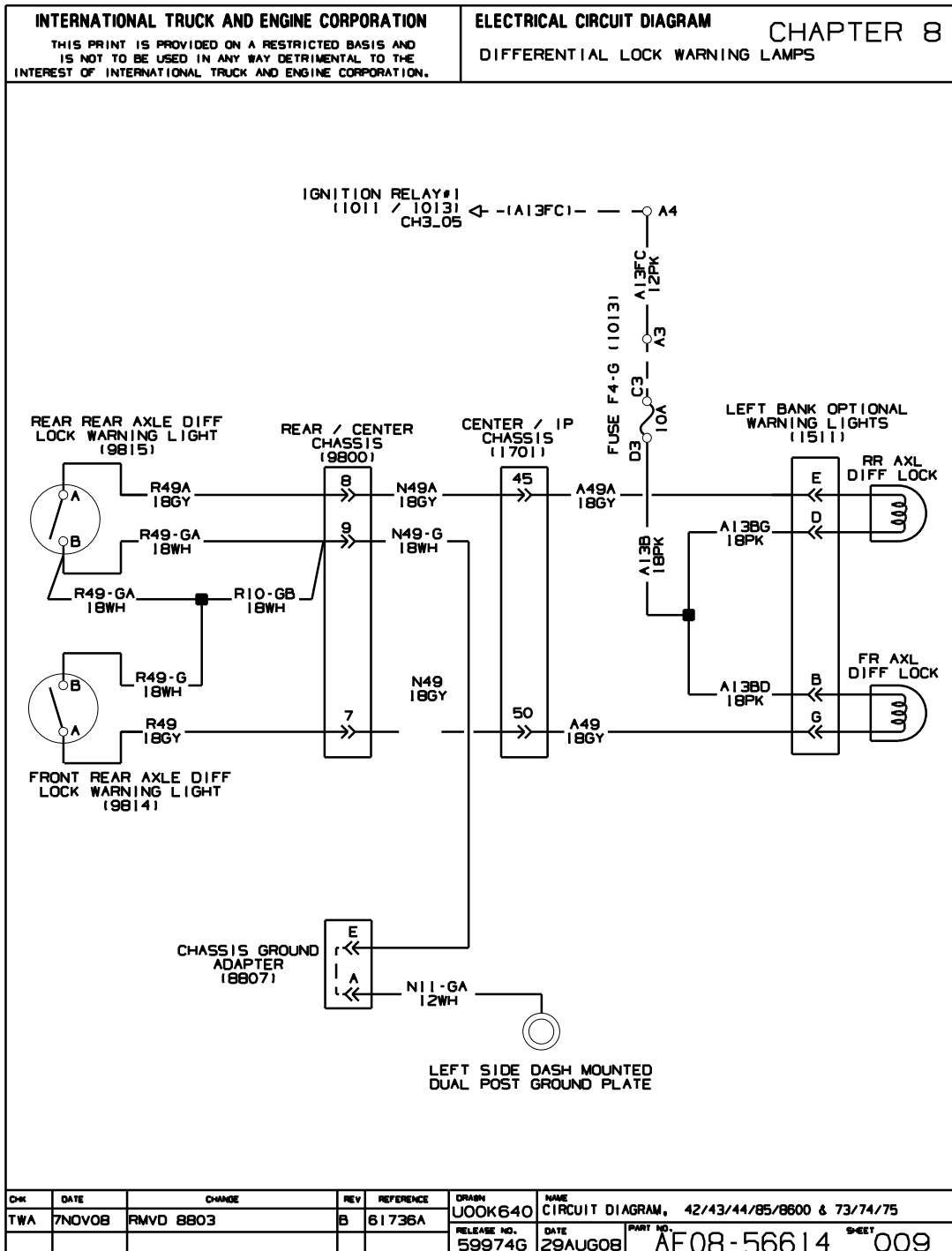


Figure 138 Differential Lock Warning Lamps

8.10. PARK BRAKE SWITCH HYDRAULIC, P. 9A

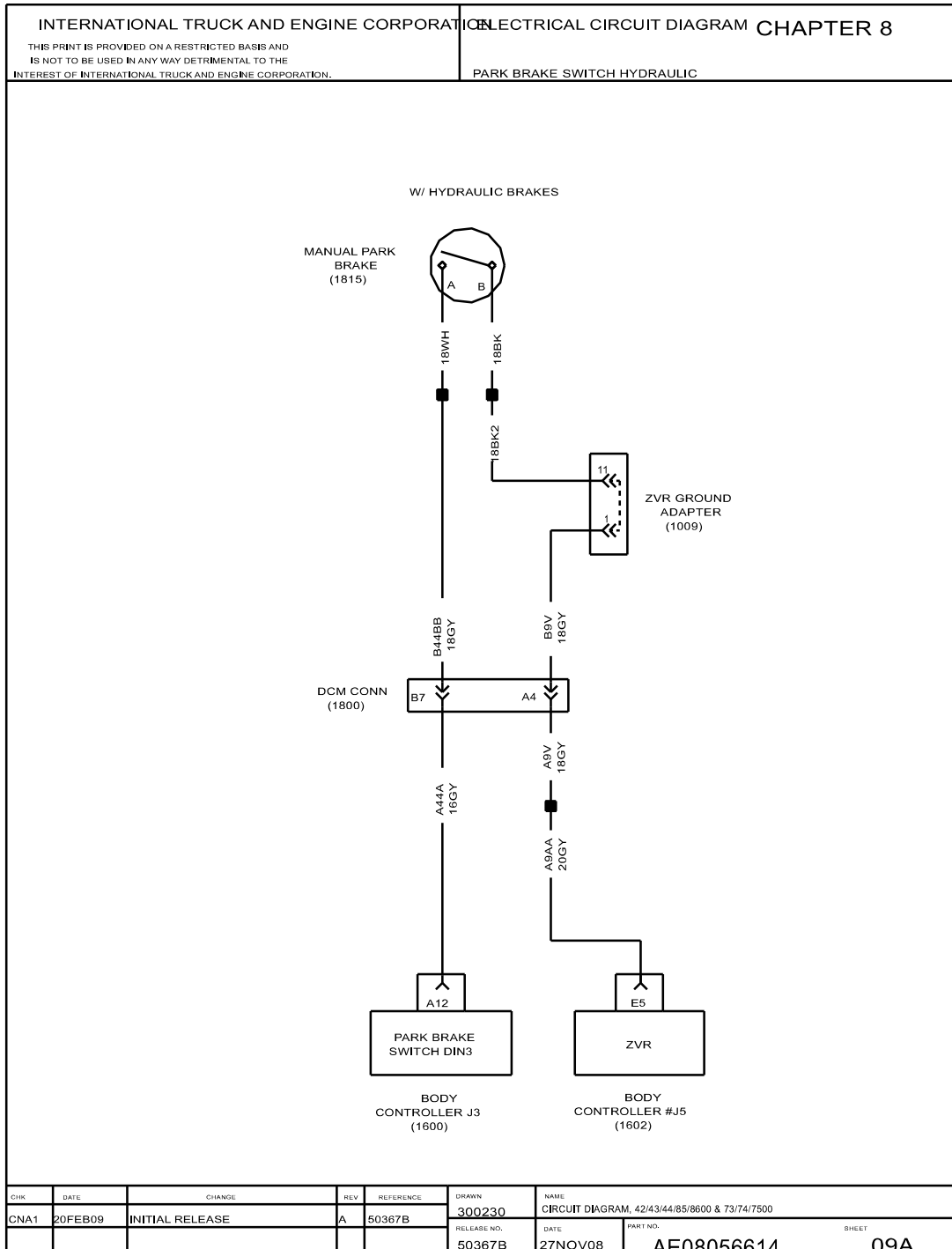


Figure 139 Park Brake Switch Hydraulic

8.11. AIR PARK BRAKE AND MANUAL TRANSMISSION OIL TEMP GAUGE, P. 10

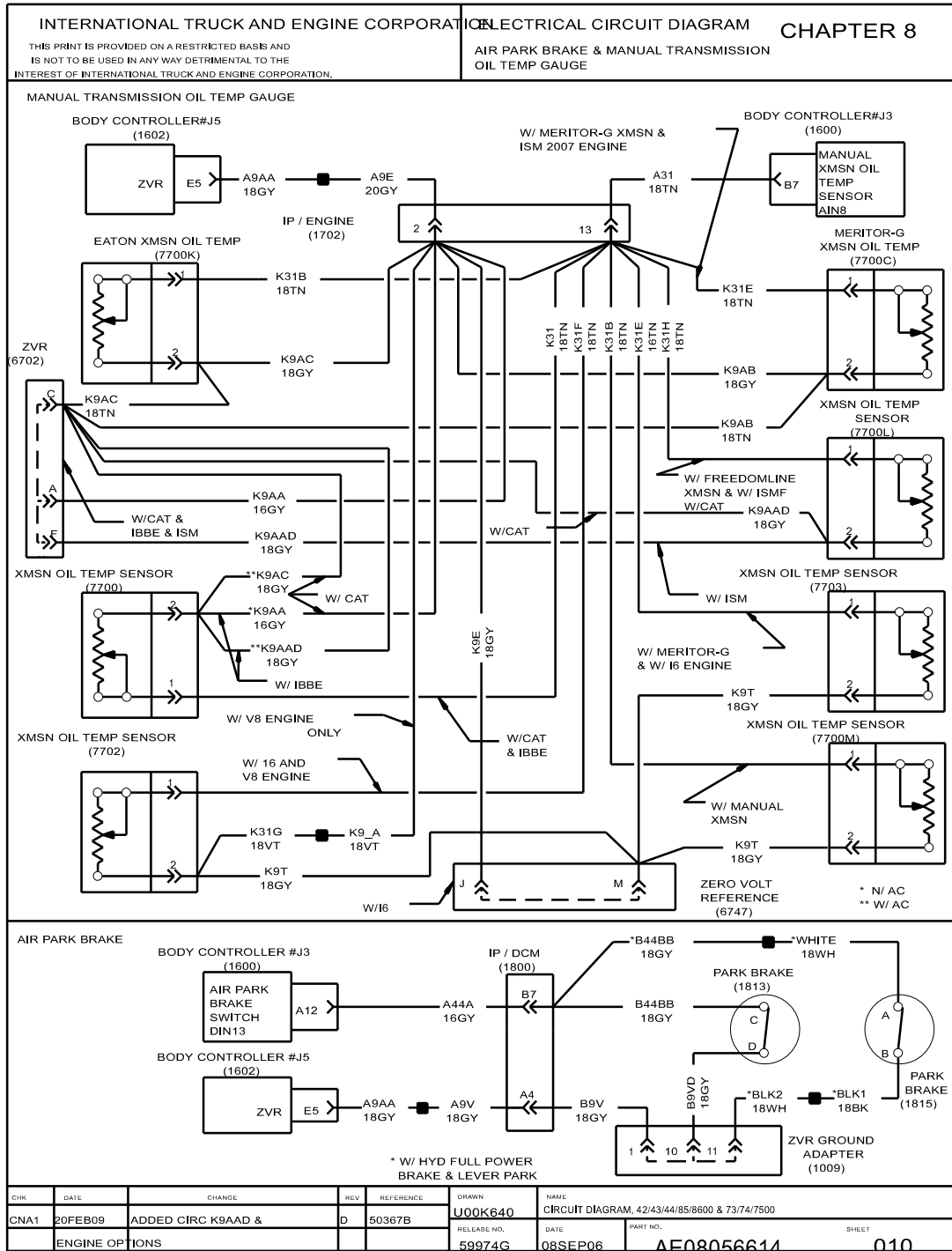


Figure 140 Air Park Brake and Manual Transmission Oil Temp Gauge

8.12. FREEDOMLINE TRANSMISSION OIL TEMP GAUGE AND SURGE PUMP, P. 10A

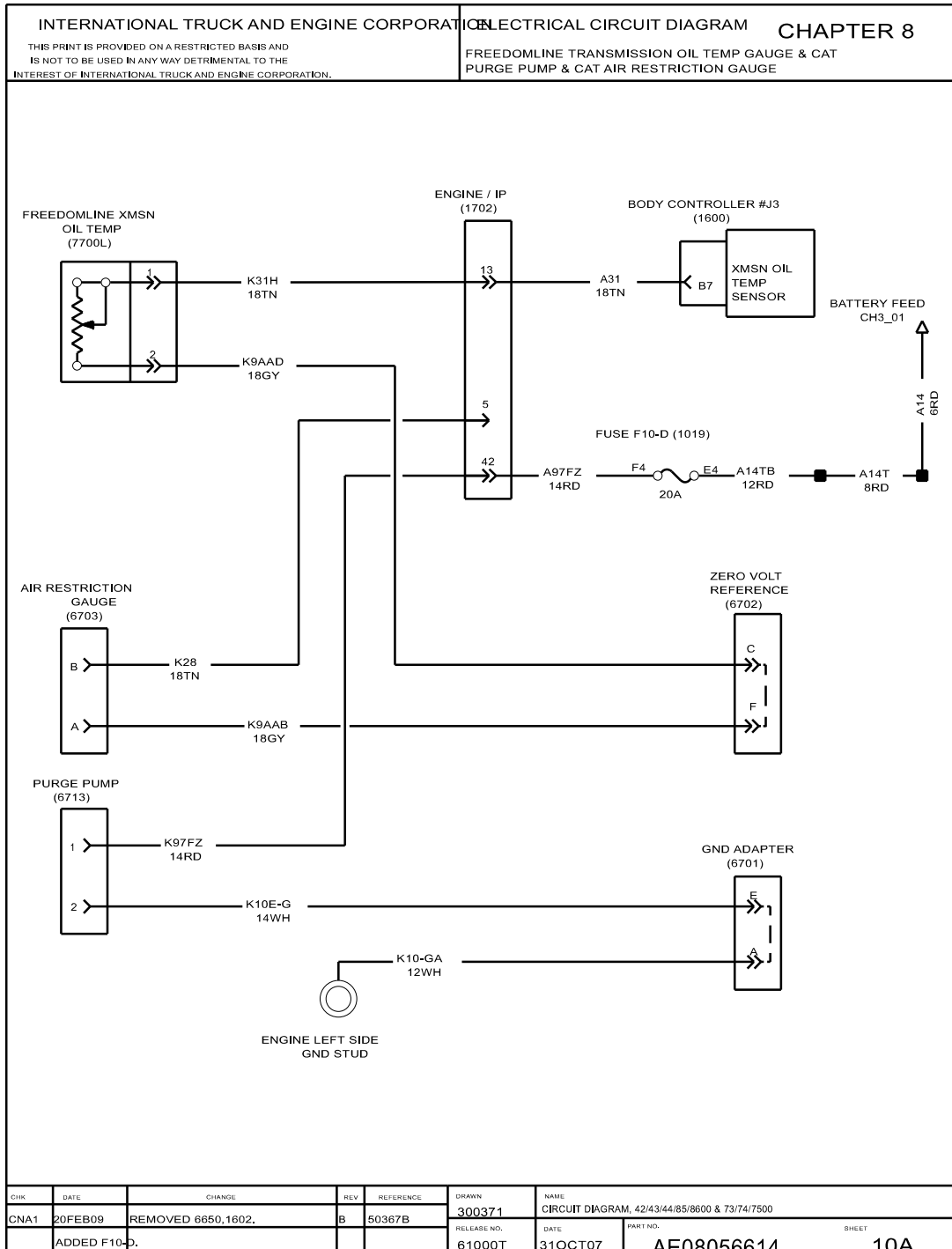


Figure 141 Freedomline Transmission Oil Temp Gauge and Surge Pump

8.13. GAUGES AND WARNING LIGHTS – AMMETER, P. 11

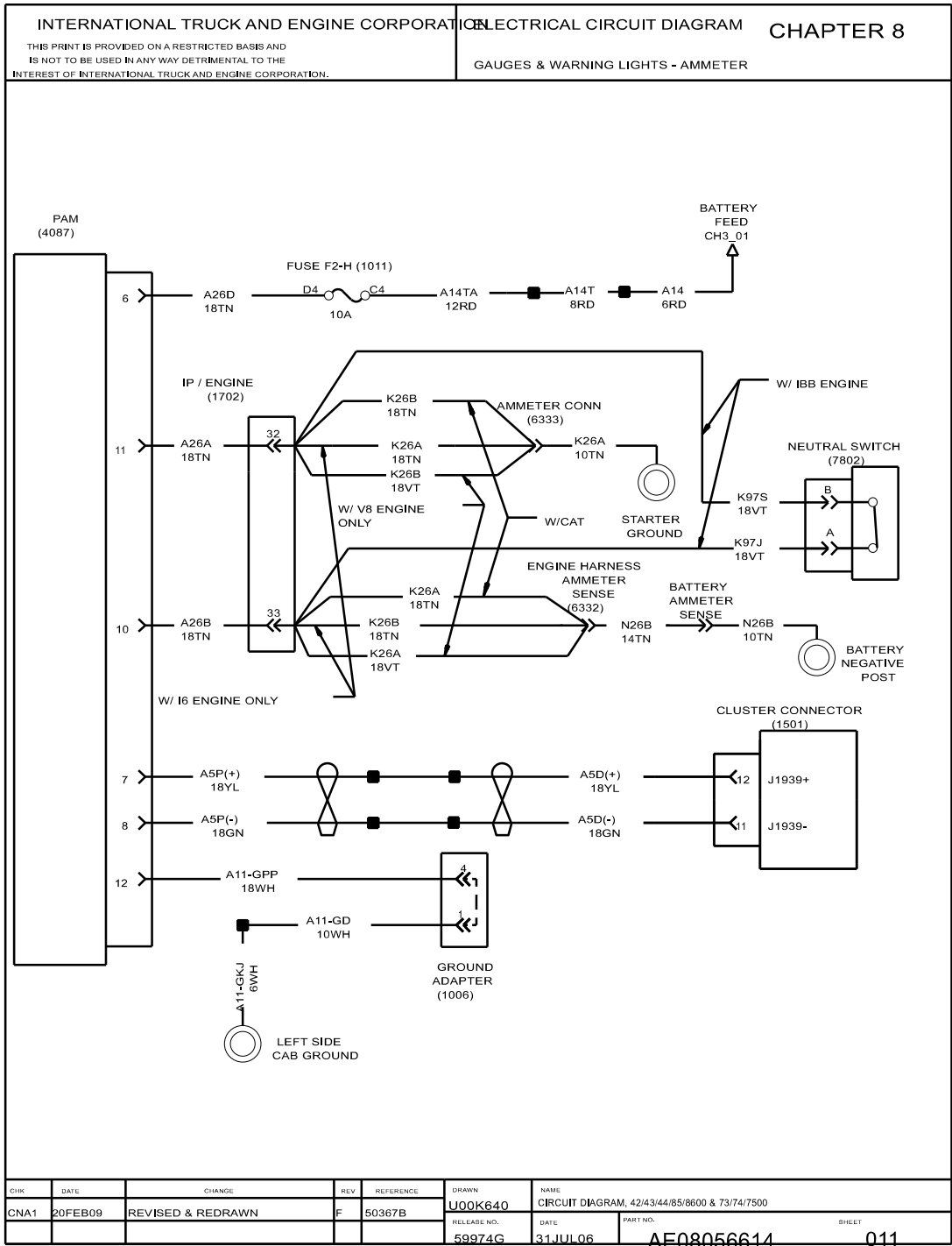


Figure 142 Gauges and Warning Lights – Ammeter

8.14. ENGINE OIL TEMPERATURE GAUGE WITH CATERPILLAR, P. 12

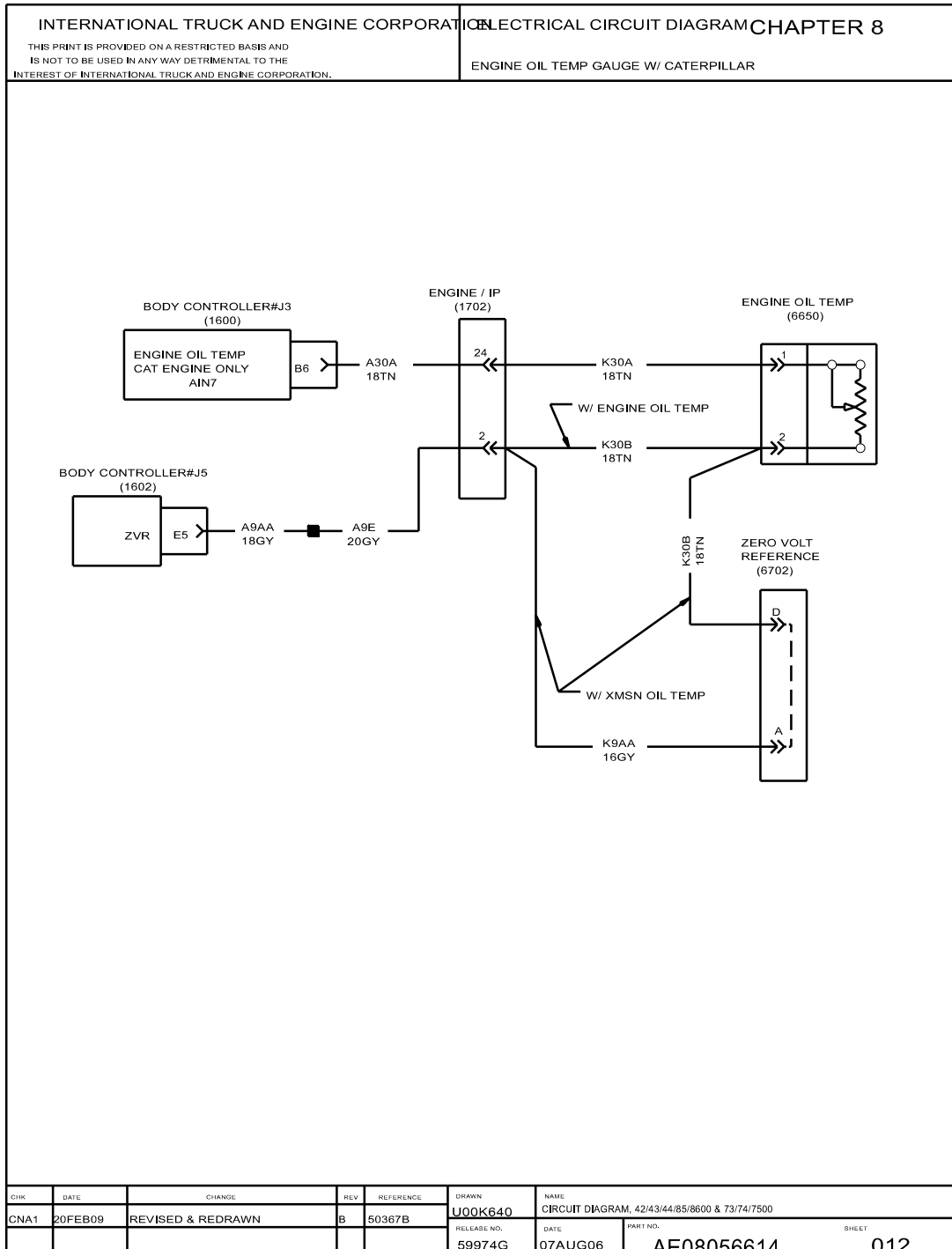


Figure 143 Engine Oil Temperature Gauge with Caterpillar

8.15. FRONT AXLE ENGAGEMENT LAMP, P. 13

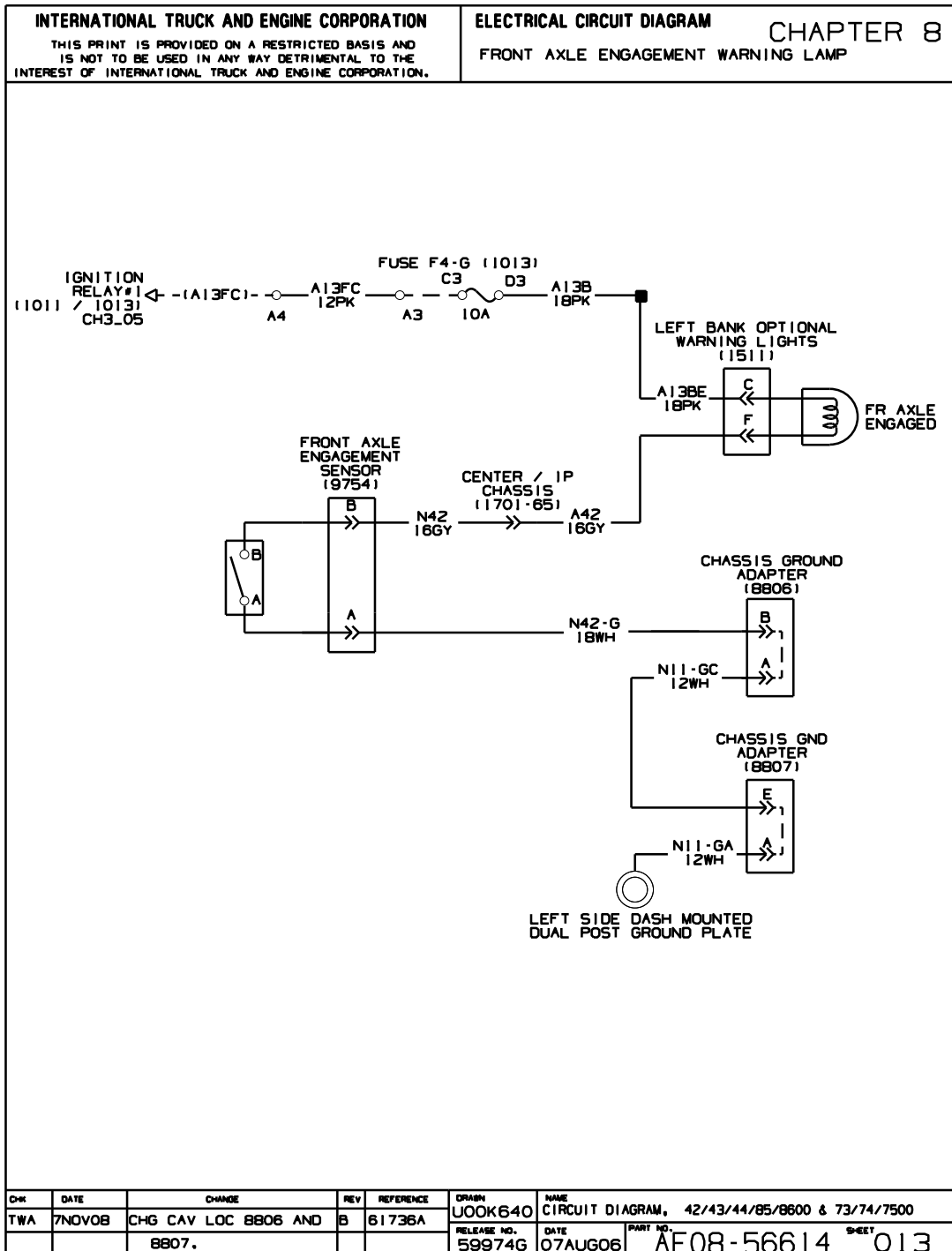


Figure 144 Front Axle Engagement Lamp



8.16. WARNING LIGHTS – RIGHT BANK – OPTIONAL, P. 14

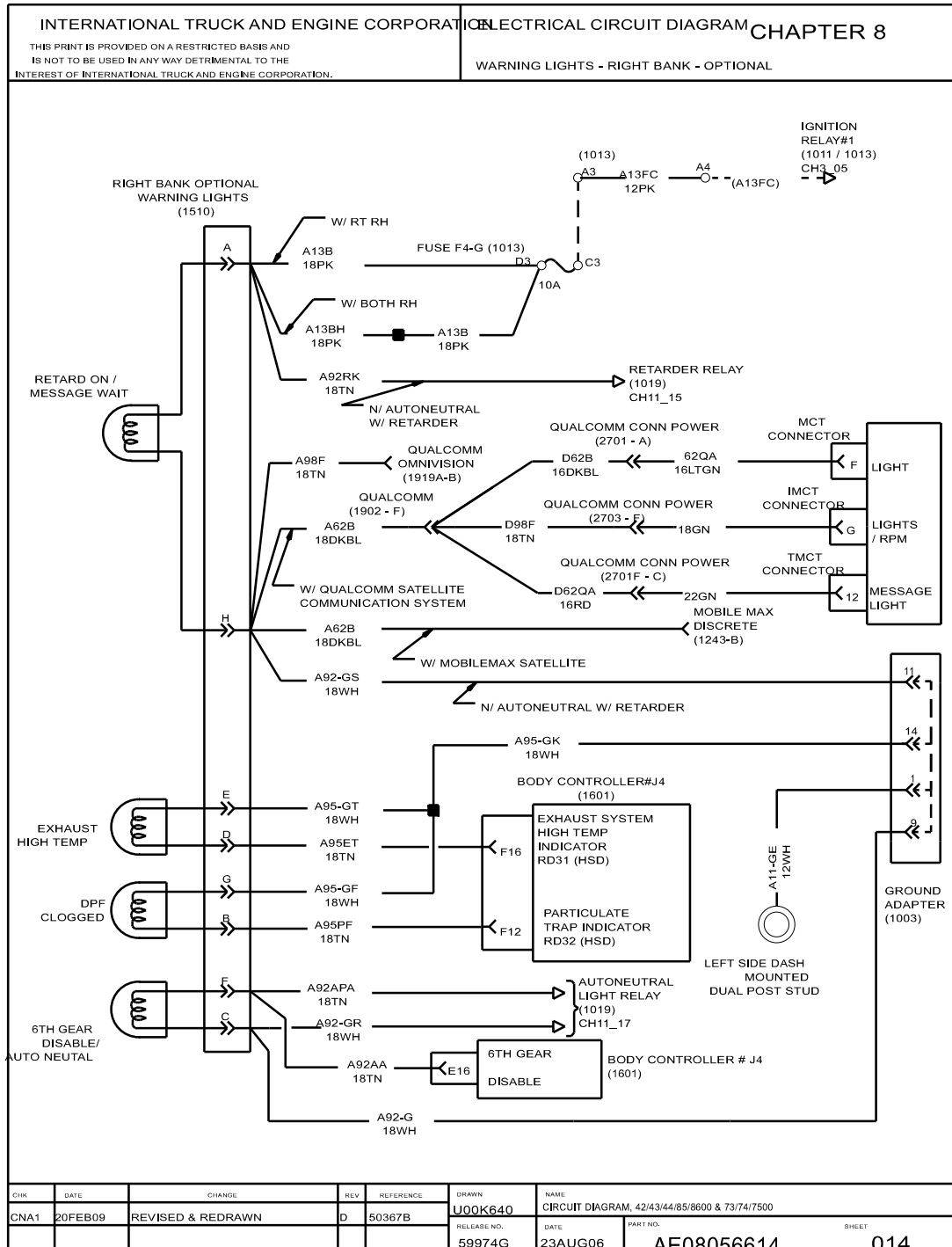
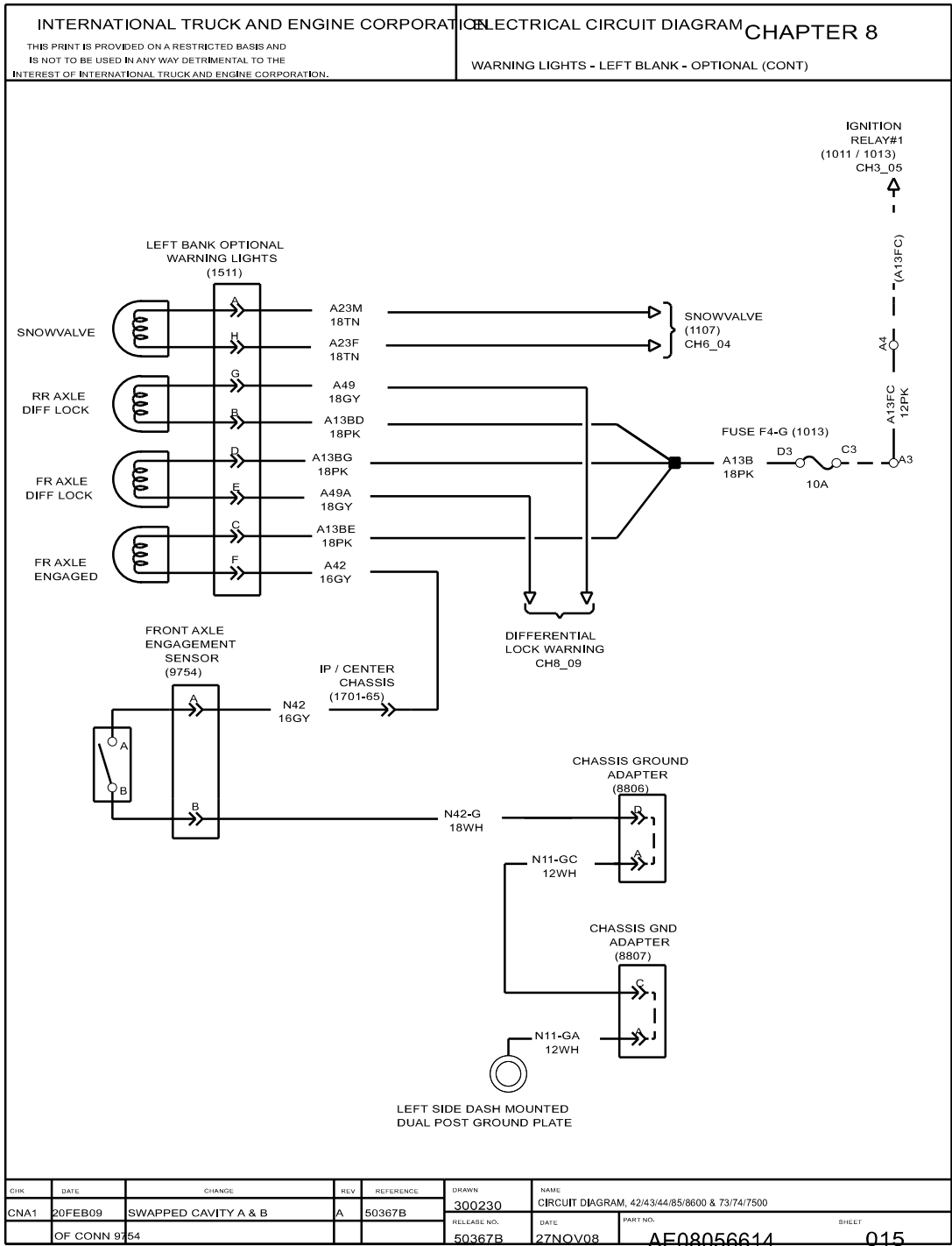


Figure 145 Warning Lights – Right Bank – Optional

8.17. WARNING LIGHTS — LEFT BANK — OPTIONAL, P. 15



8.18. LOAD MONITORING, P. 16

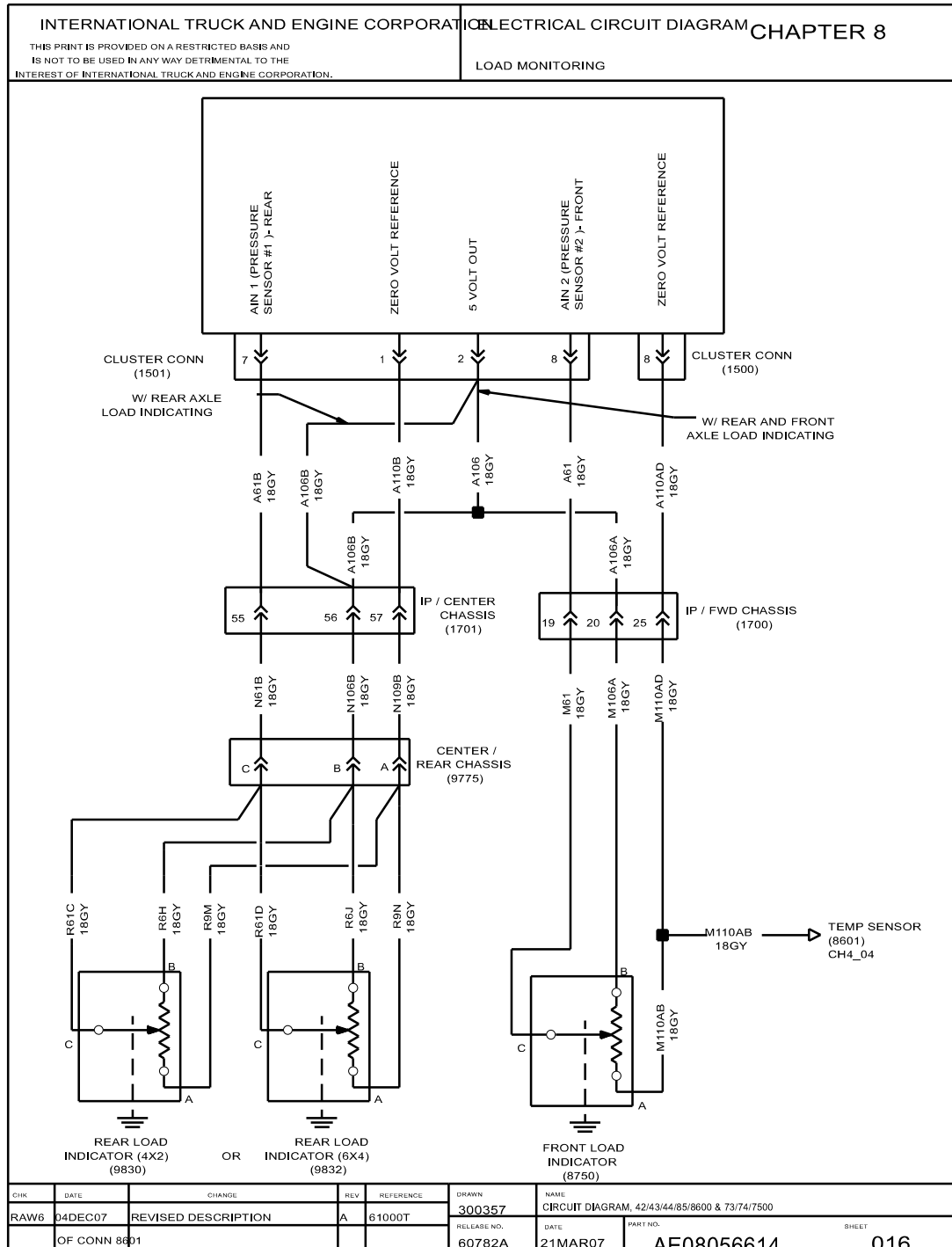


Figure 147 Load Monitoring